



QUINTE WEST MINOR HOCKEY EMERGENCY ACTION PLAN

The coach, manager and trainer person should initiate a meeting at the beginning of the season to ensure they have the volunteers required for their Emergency Action Plan.

EQUIPMENT LOCATION



ARENA INFORMATION

ARENA/FACILITY

DUNCAN MCDONALD MEMORIAL ARENA

ADDRESS

8 COUCH CRESCENT, TRENTON, ONTARIO

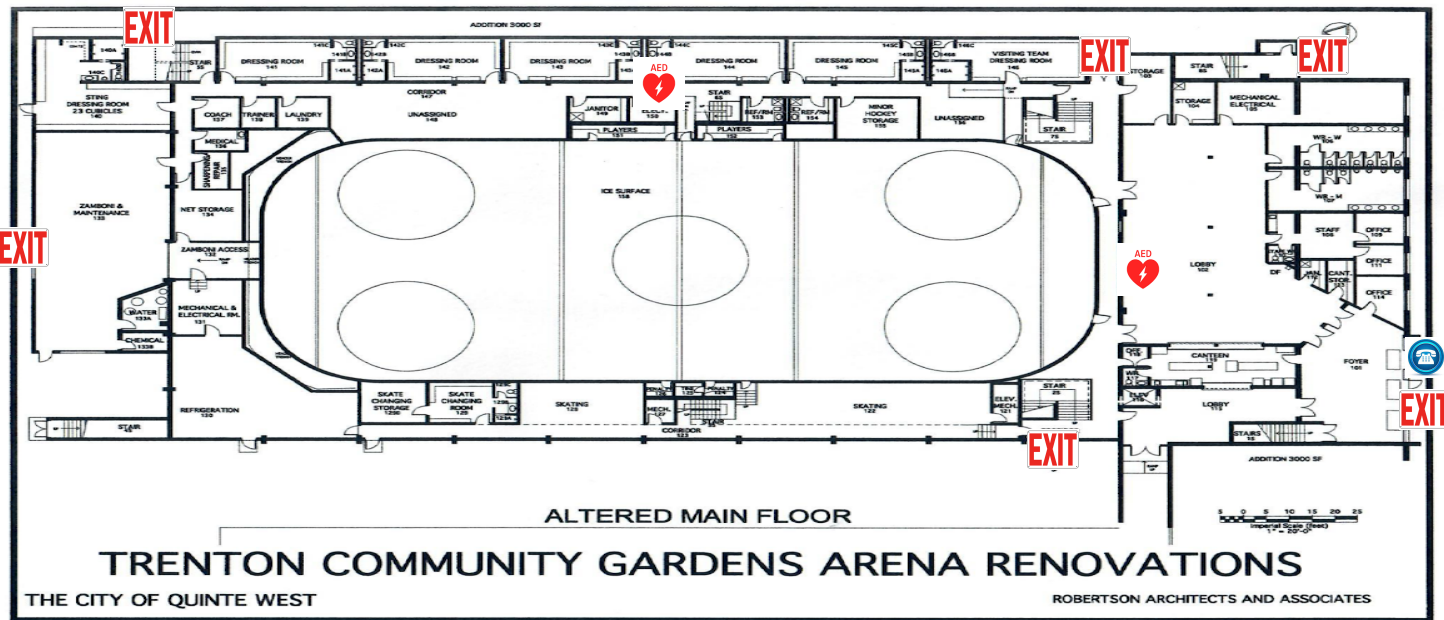
PHONE NUMBER

613-392-2841 EXT 4951



QUINTE WEST MINOR HOCKEY EMERGENCY ACTION PLAN

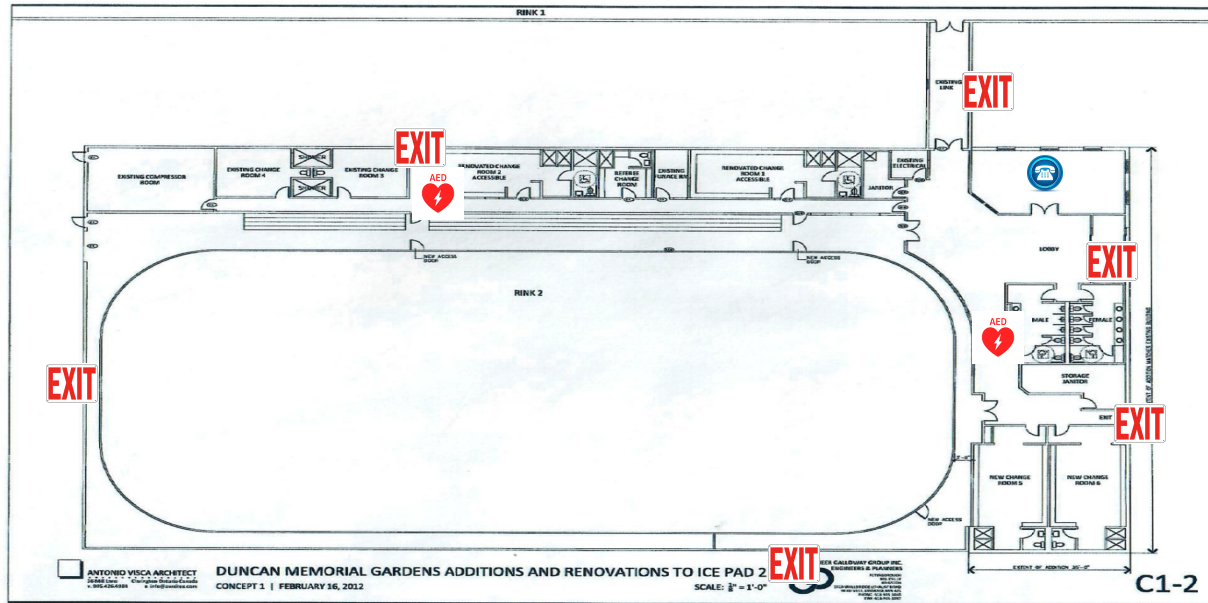
PAD 1





QUINTE WEST MINOR HOCKEY EMERGENCY ACTION PLAN

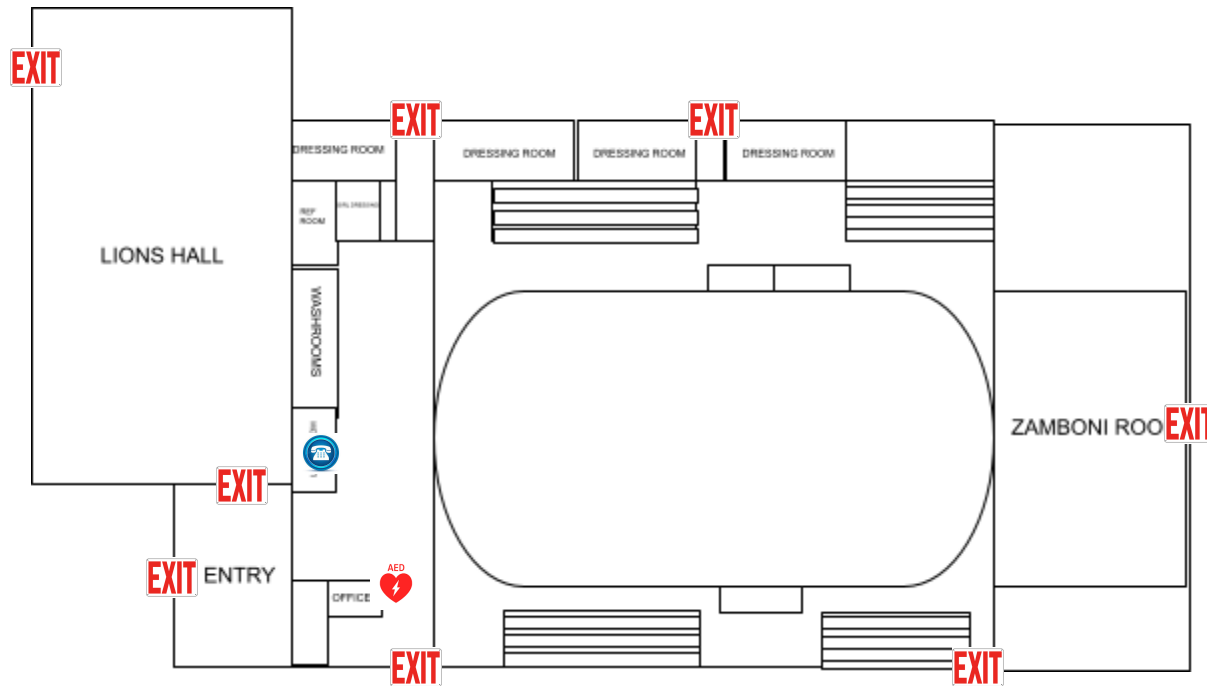
PAD 2

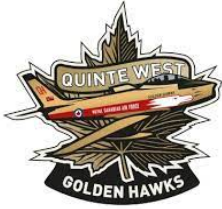




QUINTE WEST MINOR HOCKEY EMERGENCY ACTION PLAN

ARENA/FACILITY NAME	ADDRESS	PHONE NUMBER
Dr. McMullen Recreation Centre	35 March Street, Frankford, Ontario	613-398-6433





QUINTE WEST MINOR HOCKEY EMERGENCY ACTION PLAN

TEAM INFORMATION

TEAM:

MANAGER:

PHONE NUMBERS:

HEAD COACH:

PHONE NUMBERS:

ASST. COACH:

PHONE NUMBERS:

ASST. COACH:

PHONE NUMBERS:

TRAINER:

PHONE NUMBERS:

TRAINER:

PHONE NUMBERS:

TRAINER:

PHONE NUMBERS:

CHARGE PERSON:

PHONE NUMBERS:

CALL PERSON:

PHONE NUMBERS:

EMERGENCY SERVICES:

EMS, FIRE, POLICE

PHONE NUMBERS:

911

HEAD TRAINER:

PHONE NUMBERS:



QUINTE WEST MINOR HOCKEY EMERGENCY ACTION PLAN

ROLES & RESPONSIBILITIES

<p>TRAINER/CHARGE PERSON</p> <ol style="list-style-type: none"> 1. Initially take control of the situation. 2. Instructs player to lay still and others not to move the player. 3. Assess injury status of the player and decide if medical care is required. 4. If the injury is serious then signal your call person. 	<p>CALL PERSON</p> <ol style="list-style-type: none"> 1. Makes call when emergency assistance is required.(ensure call person's cell phone works in facility) 2. Know location of alternate phones in the facility being played in. 3. Ideally at all games and practices and not involved on the bench. 4. Has a list of emergency phone numbers in the area of the facility. 5. Has a diagram displaying specific directions and best route to the arena.
<p>CONTROL PERSON</p> <ol style="list-style-type: none"> 1. Pre-determine the location of AED and other emergency equipment in the facility. 2. Retrieving the AED and/or first aid kit and bringing it to the injured player if requested. 3. Seeking highly-trained medical personnel in the facility if requested by the trainer person. 4. Ensure teammates, other participants and spectators are not in the way of the trainer person. 5. Advise opponents, on-ice officials, arena staff and parents of the steps being taken. 6. Ensure emergency services get all information needed on location, situation and status of injured player. 7. Meet emergency services on arrival and direct to the injured player. 	<p>IMPORTANT REMINDERS</p> <ol style="list-style-type: none"> 1. The game official continues to assume the role of being in charge of the overall environment. 2. It is important for officials to note that if the trainer person makes the signal for assistance that there may be a number of pre-determine people who will respond and will require access to the ice. 3. Once emergency services are called, the official should send both teams to their dressing rooms.



QUINTE WEST MINOR HOCKEY EMERGENCY ACTION PLAN

